



54, Annapurna Industrial Estate, Tilak Road,  
Ghatkopar (E), Mumbai - 400 077 India  
Tel: +91-22-21029911  
E-mail: sales@excellaelectronics.com

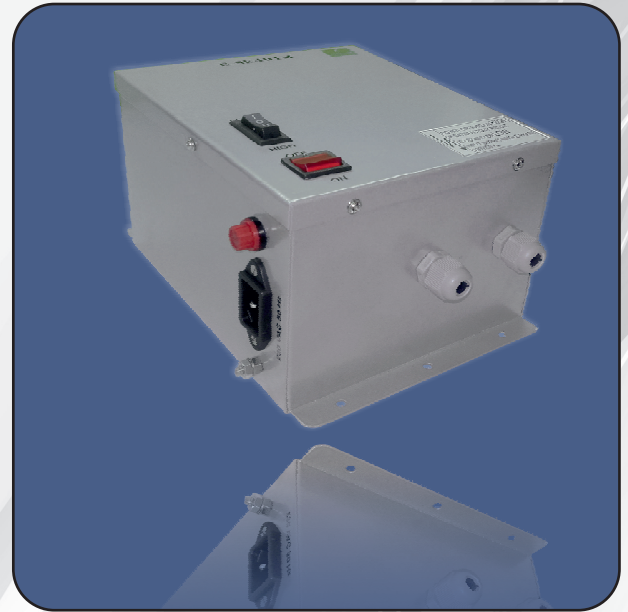


## STATIC ELIMINATOR

### E-SE401M

#### TECHNICAL DETAILS :

- Input Supply : 1 Ph, 230VAC,50Hz  $\pm$  10%
- Output Capacity : 8.5 KV
- Current Consumption : 5 mA
- Output Station : 1 Nos.
- Dimension : 155W X 215D X 120 H (Approx.)
- Weight : 7.5 Kg



#### MECHANICAL DETAILS:

